

Come — 6 ft — Together

A RETURN-TO-WORKBOOK

ShawContract®

HUMAN BEINGS ARE EMINENTLY
ADAPTIVE HUMAN BEINGS ARE
EMINENTLY *Adaptive* HUMAN BEING
EMINENTLY ADAPTIVE HUMANA
S ARE EMINENTLY ADAPTIVE
HUMAN BEINGS ARE EMINENTLY

Starting from the *ground* up.

Human beings are eminently adaptive. Our ability to think creatively and imagine new solutions is a big part of that. And today, our adaptability is being challenged every day in ways we never thought possible.

Almost overnight, many of us left our shared offices and workspaces and hunkered down at home. We became cooks and bakers, teachers and barbers, entertainers and dog walkers, all while reinventing the way we work, connect and create.

Now, as we prepare to return to our workplaces, we're among those planning back-to-work strategies and protocols to ensure employee safety & wellbeing. Just as WFH shaped a new normal at home, returning to work post-COVID will create a new normal in the workplace.

We've put together this Return-to-Workbook to ease the transition. In it are some design ideas and considerations that support many of the established recommendations for returning to the workplace. We'll continue to communicate and share with you as things evolve.

CHAPTER ONE	Physical Distancing	page 5
CHAPTER TWO	Circulation	page 14
CHAPTER THREE	Extreme Flexibility	page 21
CHAPTER FOUR	Density /Zoning	page 24
CHAPTER FIVE	Well Being	page 28
CHAPTER SIX	Cleaning	page 35

CHAPTER ONE

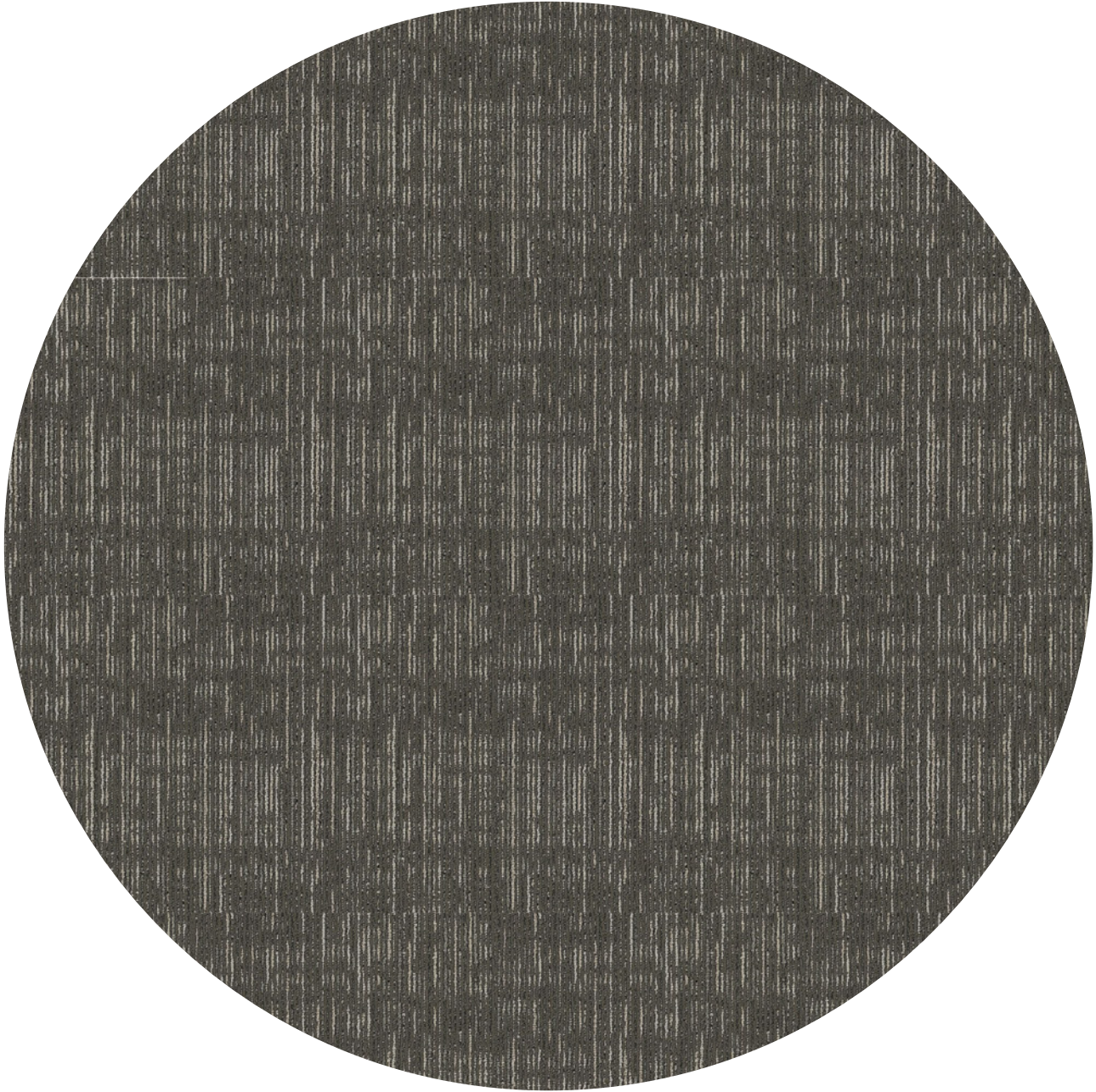
Physical Distancing

Stay separate yet together

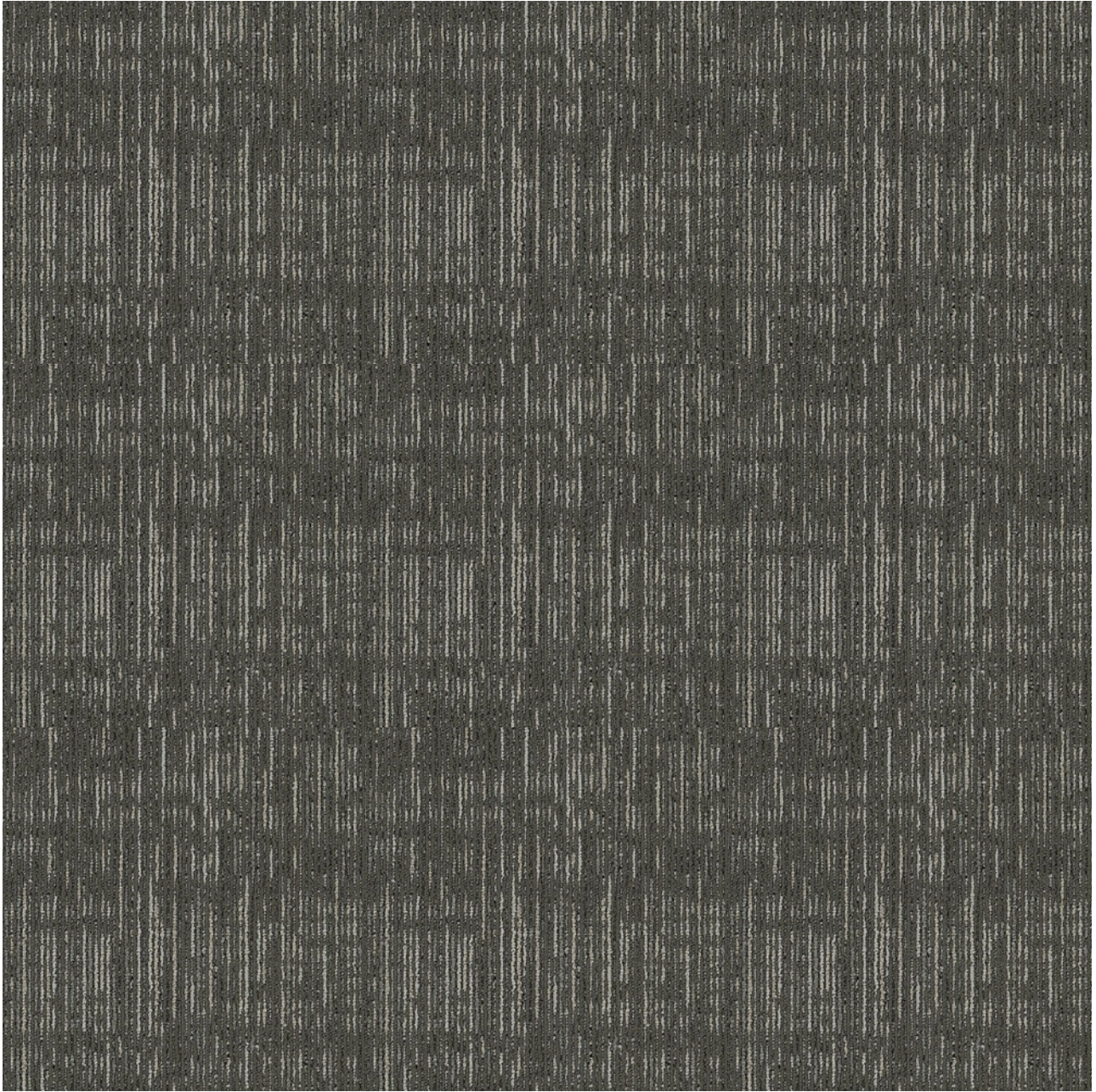
Maintaining a physical distancing of 6 ft ensures employee safety as well as peace of mind. To help reduce person-to-person close contact, there are a number of visual cues that flooring can reinforce 6 ft space allowances.

6 ft rugs

An easy yet beautiful way to denote a safe space in communal areas as well as individual workspaces.



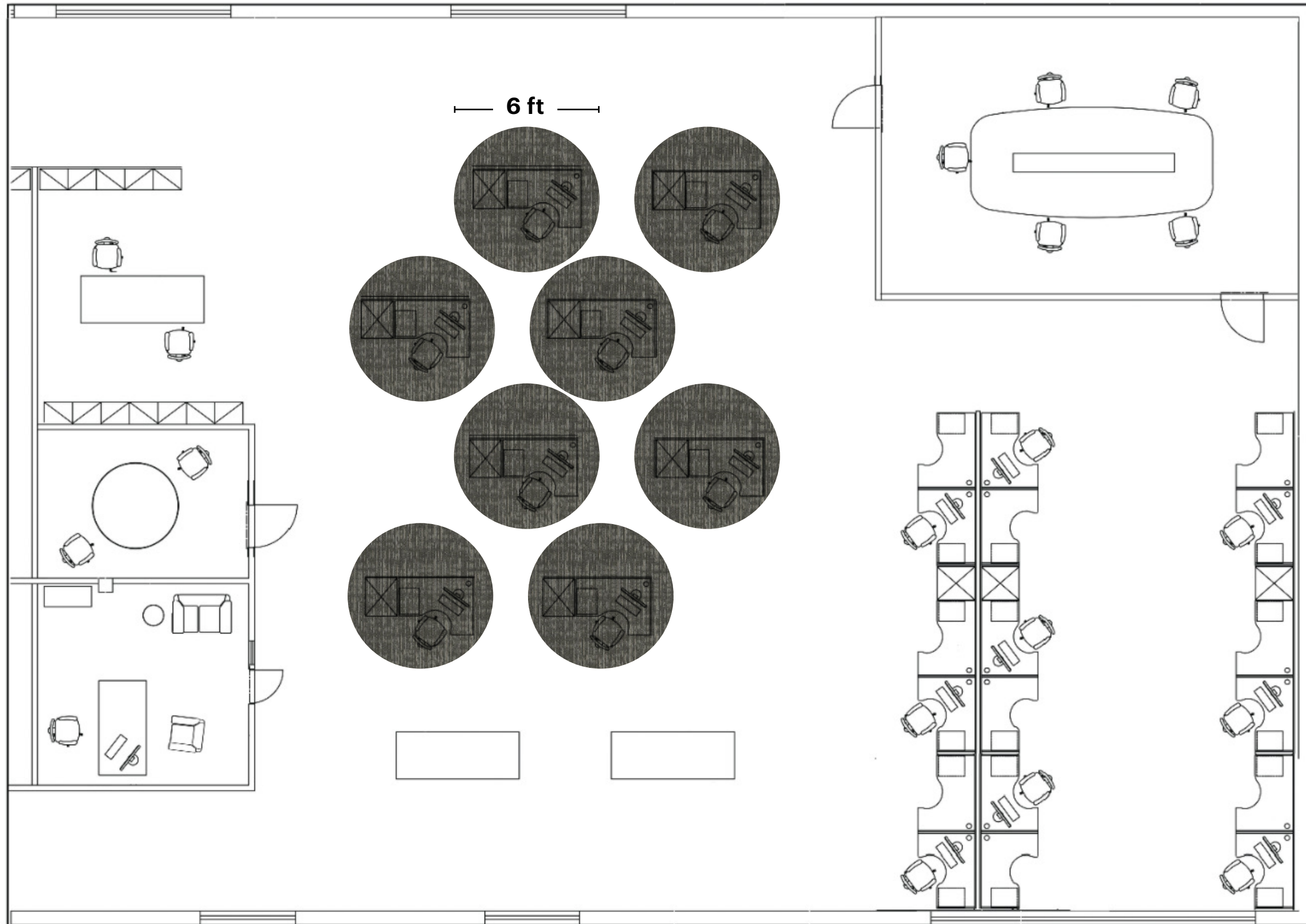
6 ft



6 ft

Working together

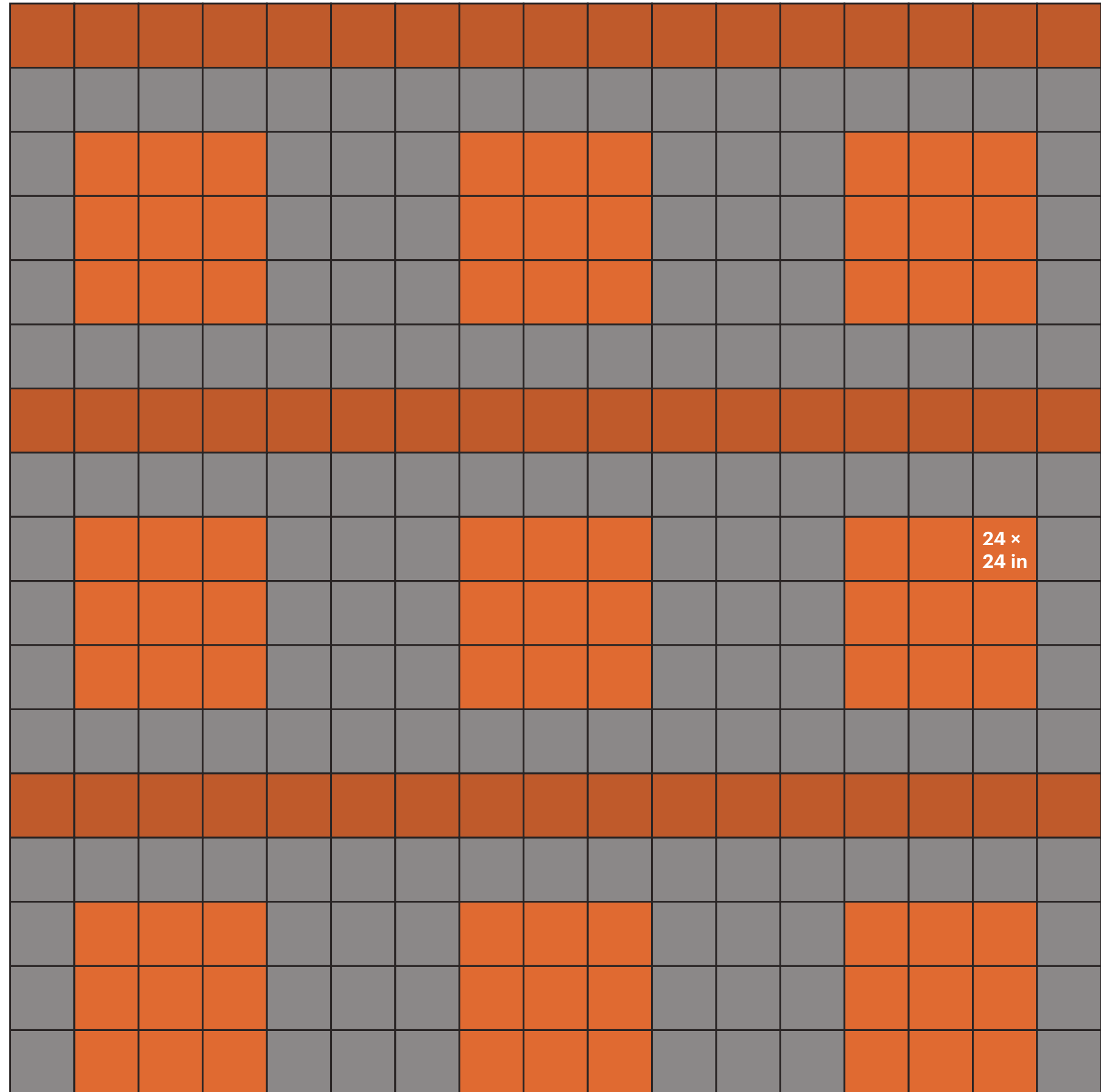
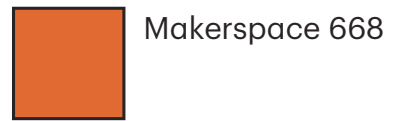
Place a 6 ft rug under workstations along with natural gathering places.



Workstations 6 ft distancing





For a quick and easy retrofit to your existing modular installation, insert a six foot grid of carpet tile to denote 6 ft zones for workstations.

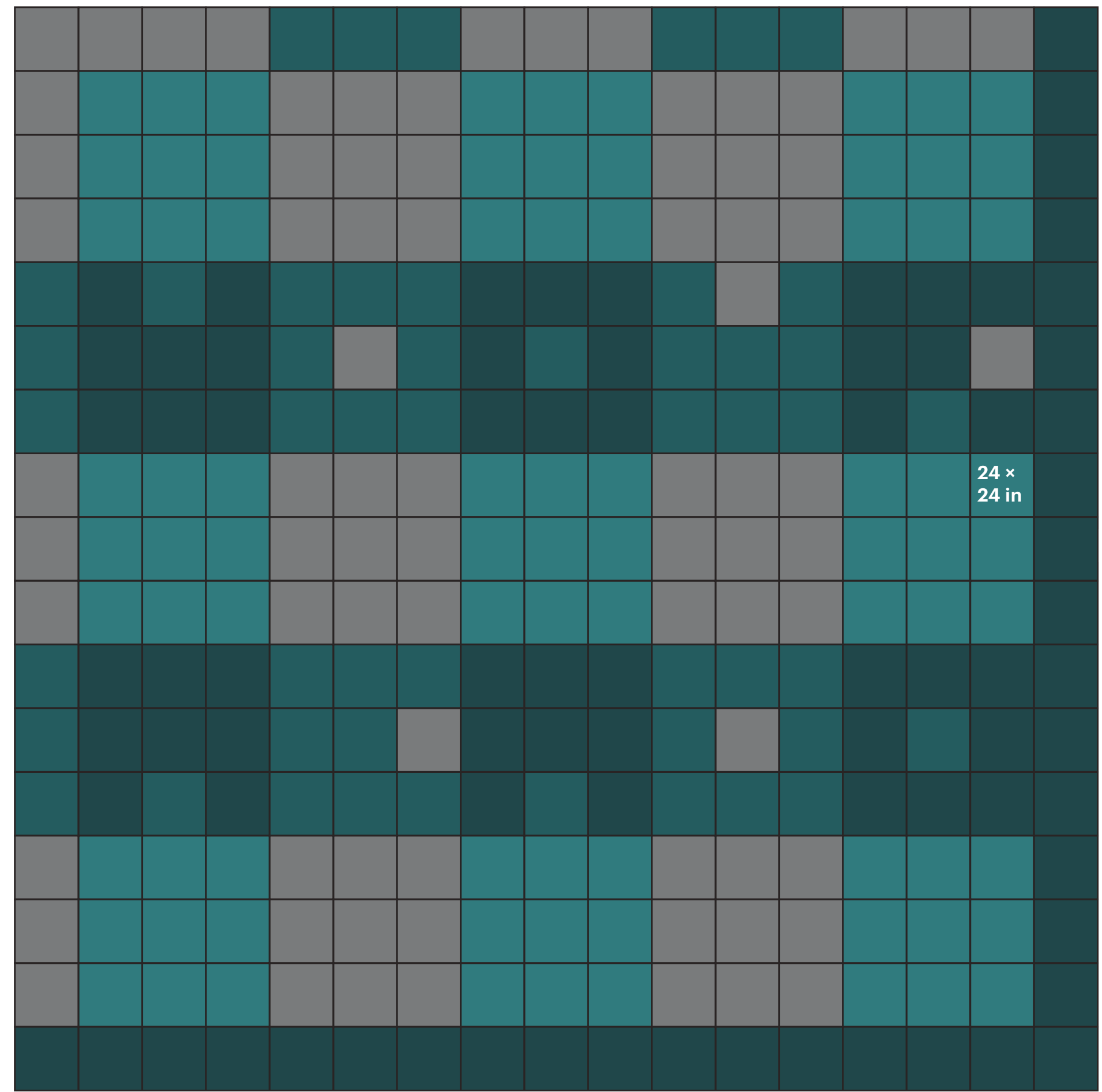
CAMPUS



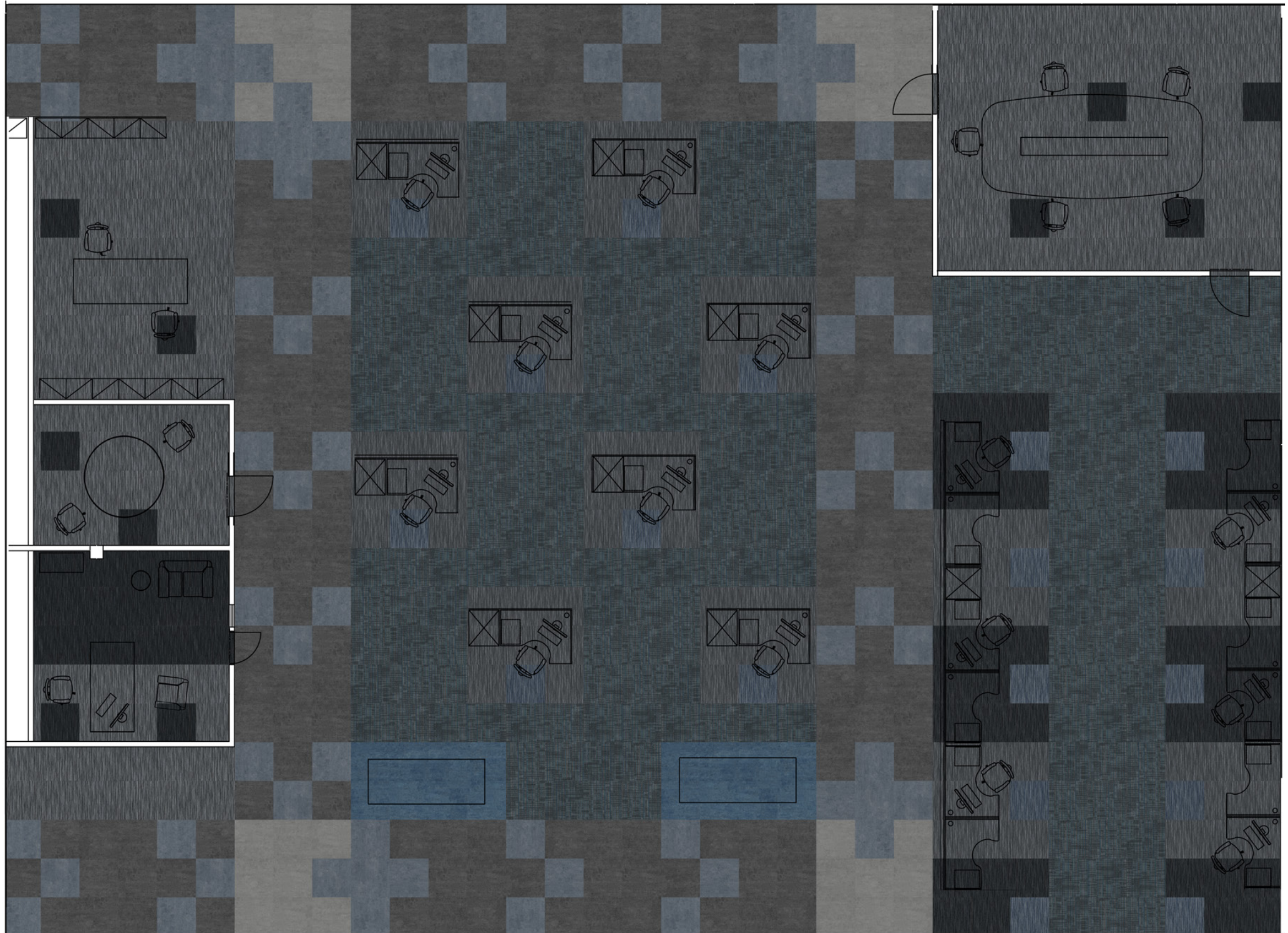
Workstations 6 ft distancing

CAMPUS

-  Commons 535
-  Commons 405
-  Quad 535
-  Makerspace 405



Workstations 6 ft distancing



Workstations 6 ft distancing

COMMUNITY



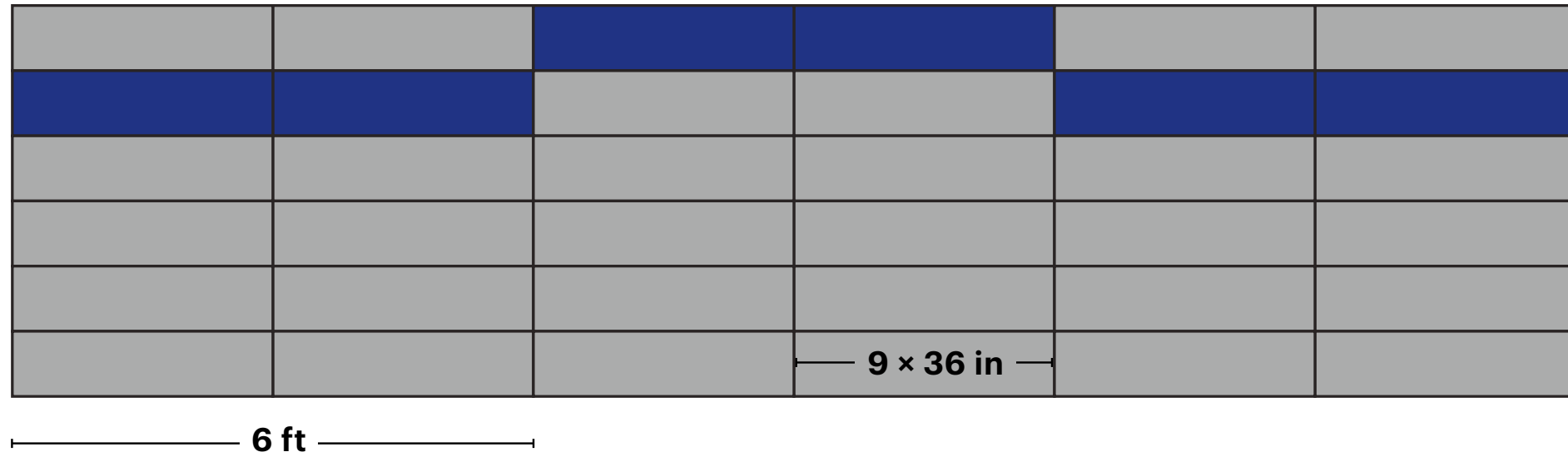
Corridors 6 ft distancing

Colorful accents spaced every 6 ft serve as visual cues for proper physical distancing.

ASSEMBLY

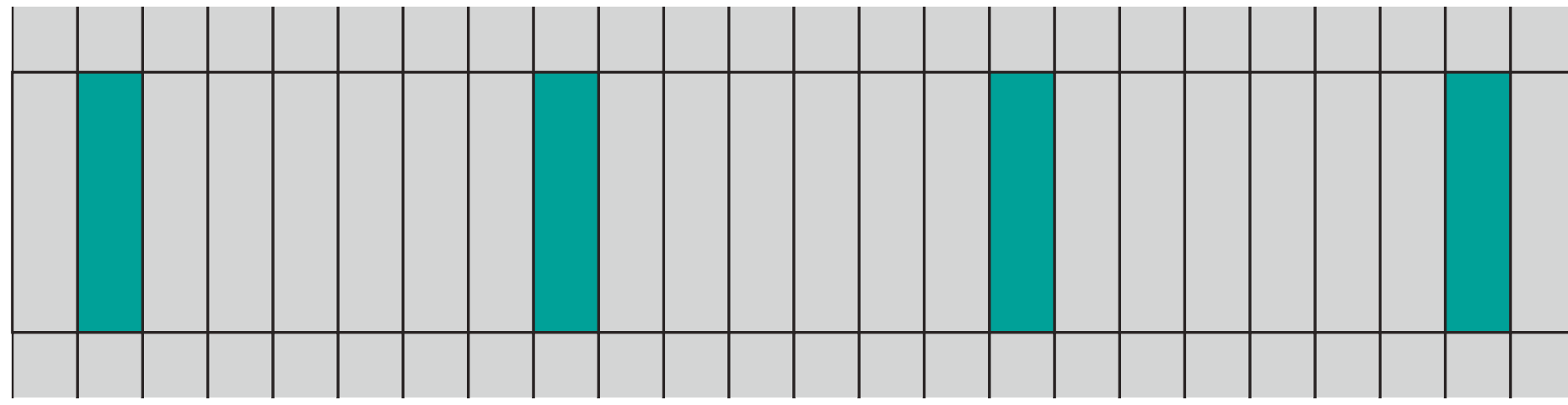
 Establish tile 5T268
Clear 67486

 Support tile 5T267
Network 67535



 Establish tile 5T268
Vivid 67375

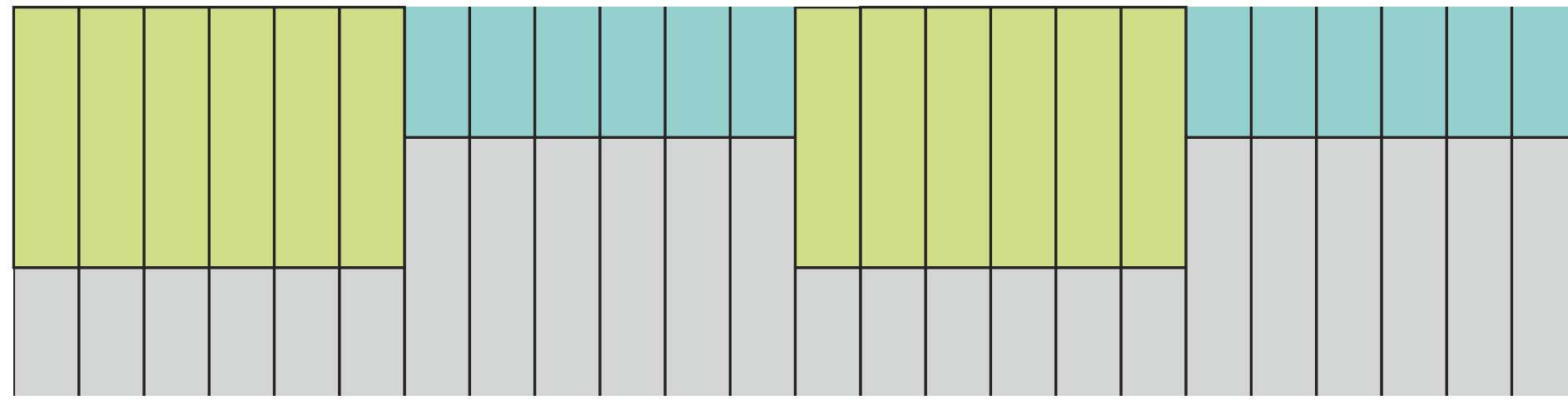
 Establish tile 5T268
Network 67535



 Convene tile 5T269
Vivid network 67539

 Establish tile 5T268
Network 67535

 Convene tile 5T269
Brilliant network 67540

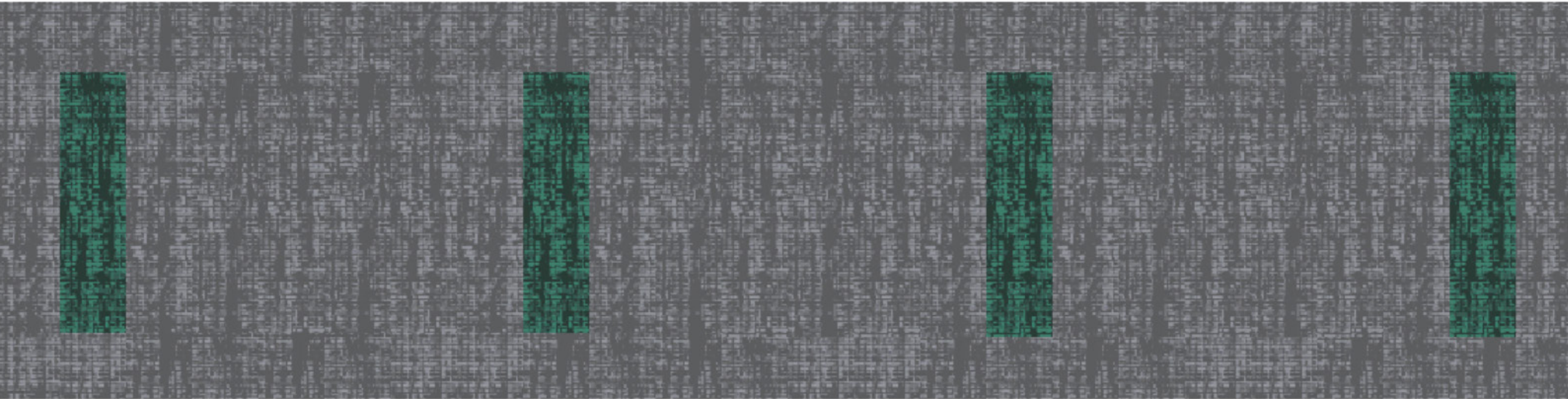
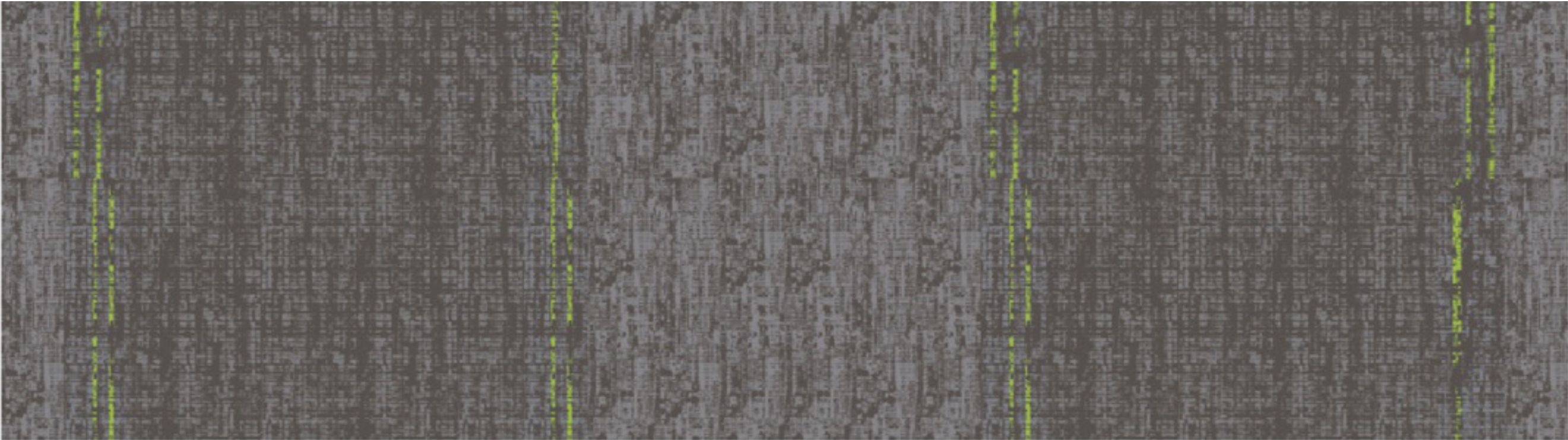


Corridors 6 ft distancing

To create a visual reminder of physical distancing, insert an accent tile every 6 ft in your existing installation.



ASSEMBLY





CHAPTER TWO

Circulation

Walk this way

Corridor traffic throughout the space will need to become mono-directional in many instances (this will depend on corridor width) to promote proper distancing. Flooring cues can clearly designate directionality in these areas. For this, chevron LVT installations, arrows printed or tufted in carpet tile and unique color patterns help guide the way.

Circulation Paths

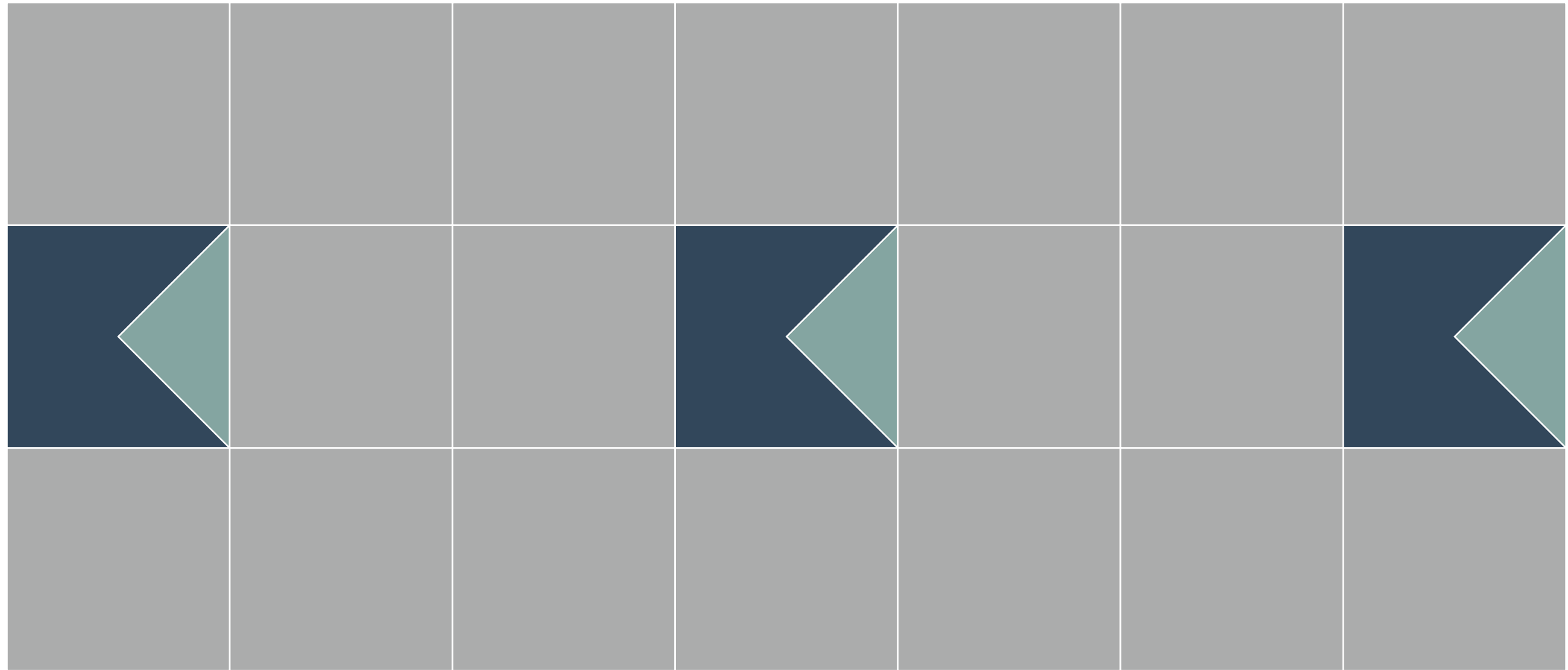
Inside Shapes Point Installed over LVT



Inside Shapes

Remove existing 24 × 24 inch tile and easily replace with Point tile for circulation flow.

**24 × 24 in
Point tile**



6 ft

Printed way-finding 24 × 24 inch carpet tiles

Directional graphics printed on carpet tile can be integrated into existing tile to clearly indicate the directional flow in the space.



Pop them into an existing install



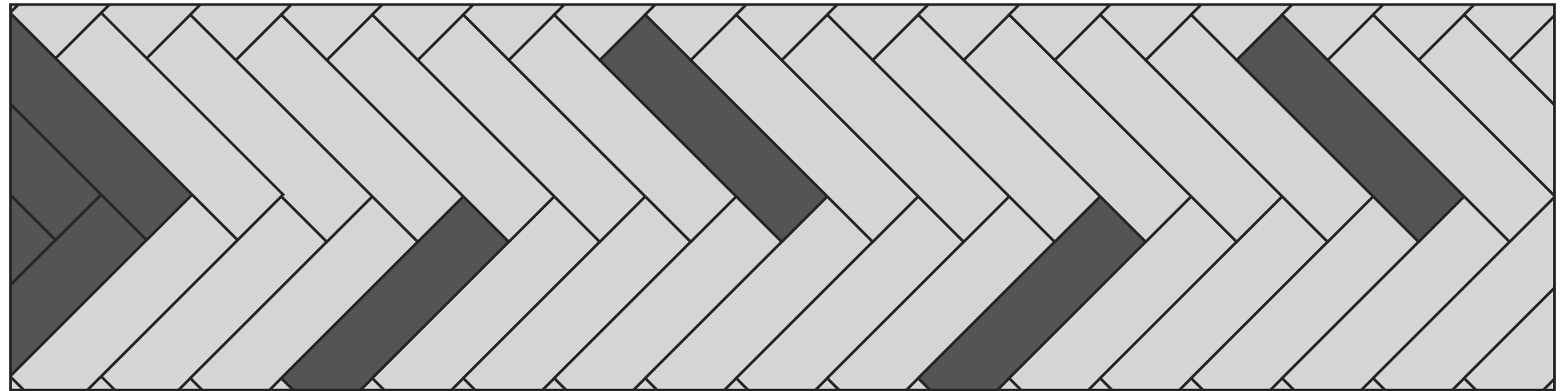
Corridors way-finding 9 × 36 Carpet tile

Herringbone and chevron installations of LVT, hardwood, or carpet signal circulation flow in the space.

ASSEMBLY

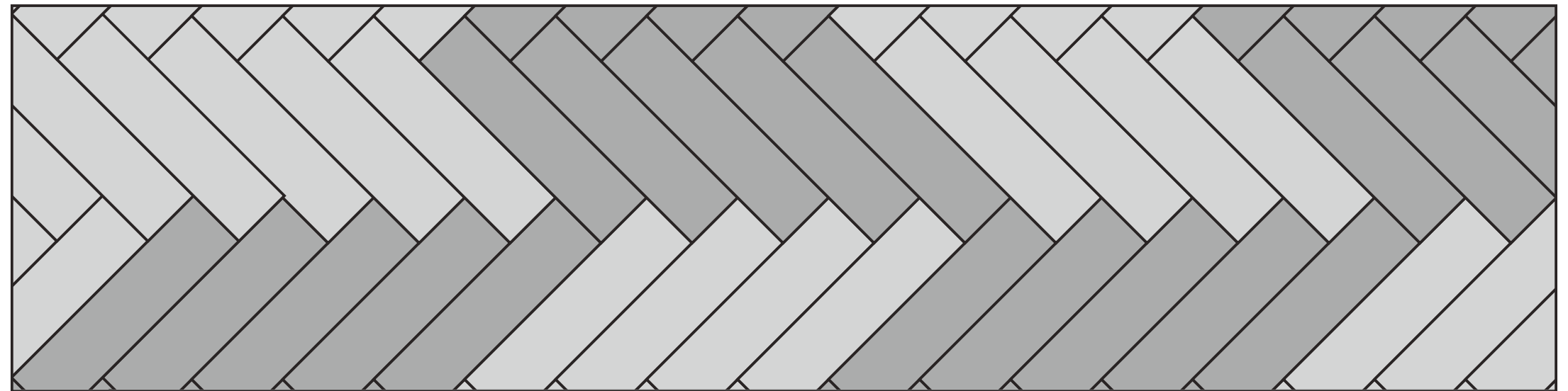
 Establish tile 5T268
System 67505

 Support tile 5T267
Network 67535



 Establish tile 5T268
Foundation 67580

 Support tile 5T267
Network 67535



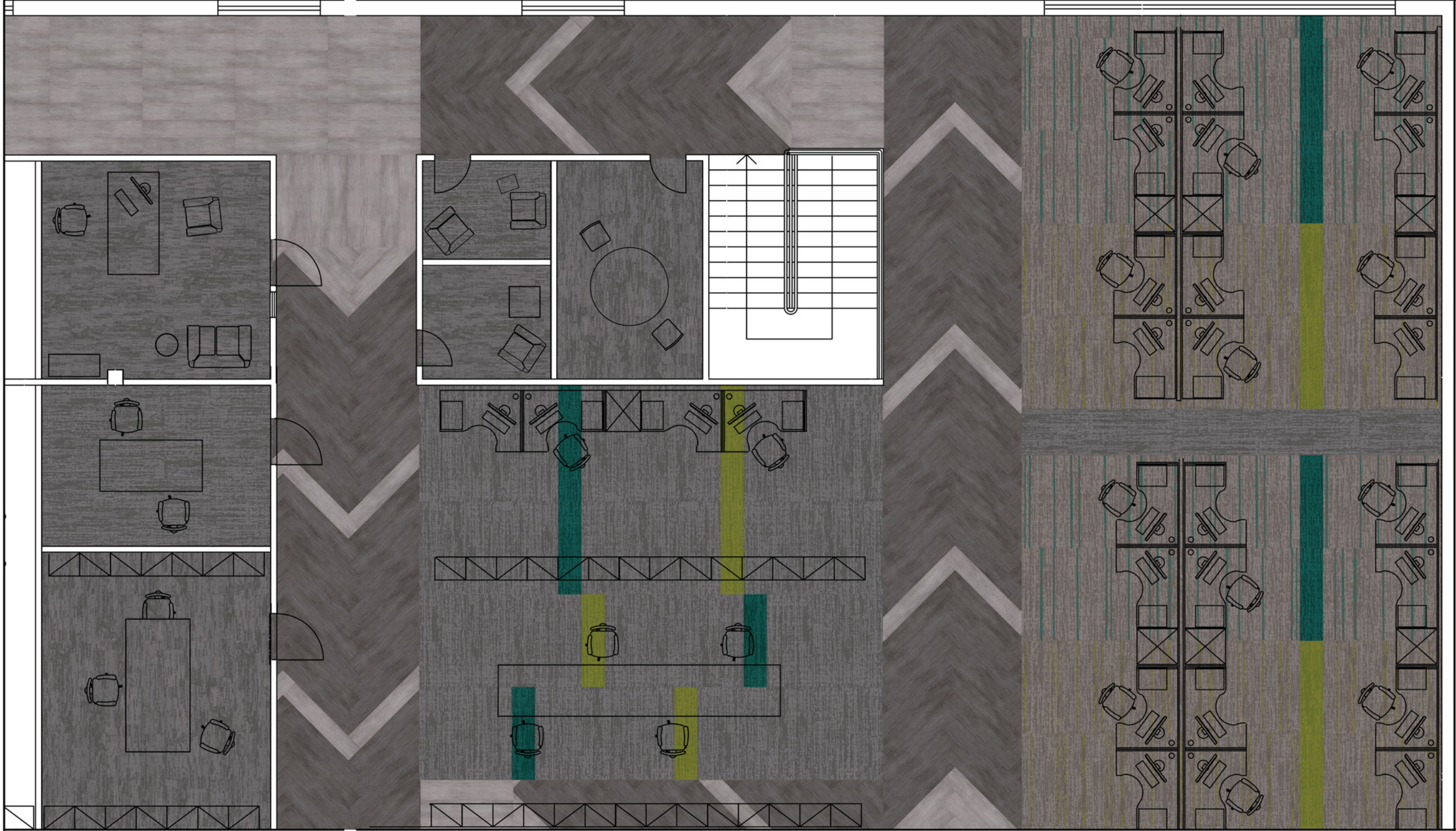
Corridors 6 ft wayfinding 9 × 36 LVT

Create way-finding and 6 ft distancing.

UNITE



Corridors 6 ft way-finding 9 x 36 / Work station 6 ft distancing



CHAPTER THREE

Extreme Flexibility

Adapt, adapt, adapt

No one knows for sure how long today's protocols will be in place or what new practices will be implemented in the future. To help companies flex their space as needs change, workspaces will need to be as adaptive as we human beings are. Modular flooring systems and rugs provide attractive and affordable ways to adapt for the short-term reality.

Adapt

Using modular carpet tile as rugs or traditional broadloom rugs over hardwood or LVT—provides temporary solutions to provide physical distancing while still aesthetically pleasing.

INSIDE SHAPES



Rugs

Available in 12 × 15 ft, 8 × 10 ft, 6 × 9 ft and 11 × 11 ft circle

MOTIF



DRIP

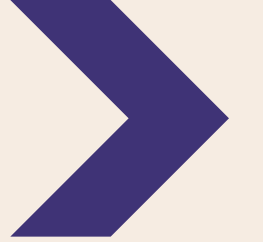


CHAPTER FOUR

Density / Zoning

Same space, fewer people

As modern corporate workspaces morph from densely populated, open, floor plans to less dense ones, flooring solutions will follow suit. A decrease in fixed desk space may mean more space given to collaborative areas. Our flooring will provide visual cues to the functionality of space—a way to define areas without walls.



Color Zones

Create zones with color to promote 6 ft distancing while still maintaining collaborative moments.

ASSEMBLY



Together / Apart

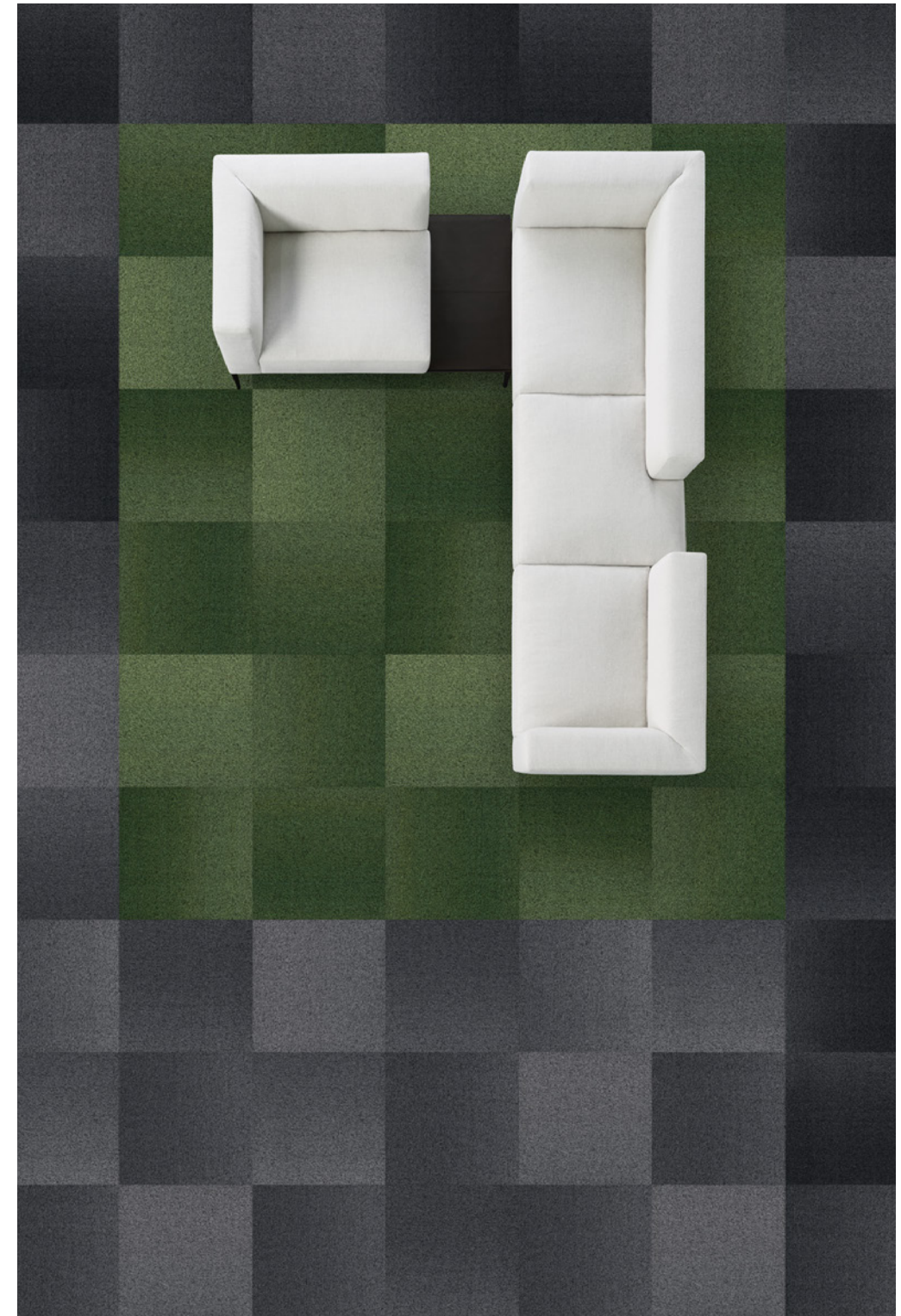
Insert linear color paths to denote a 6 ft space around workstations.

CAMPUS



Color Blocking

GRADATION



CHAPTER FIVE

Well Being

Safety begins with a feeling

As workers leave their WFH surroundings, a “sense of safe” has replaced a sense of place in terms of productivity and overall well being. Flooring can help create spaces that convey comfort, spaces that are as inviting and collaborative as they are productive and protective.

Feels Like Home

Rich textures, tonal palettes, and visual warmth can create a sense of calm and comfort - contributing to the well being and positive experience of the people in the space.

SUITED



COMMUNITY



HAVEN



Bring Nature Inside

We spend 90% of our time indoors. Bringing biophilia into our work spaces through pattern, color and texture creates a calm energy that stimulates a sense of positivity.

SHIFTING FIELDS



DESERT LIGHTS



LIVING SYSTEMS



CHAPTER SIX

Cleanliness

From the moment you step inside

New protocols will start the moment you step foot into a space. With more cleaning and disinfecting procedures, there will be an expectation of greater transparency about those procedures. Our deep cleaning and disinfection recommendations are in accordance with current CDC guidelines. And our product testing is focused more than ever on enhanced cleaning techniques.

Guidance for *Healthy* and *Clean* Environments

As companies begin to think about how to transition back into the workplace, Shaw Contract is thinking about it too - both for our own associates and the clients that we serve. As the largest commercial flooring manufacturer, we design our carpet, hardwood and resilient products to give foundation to space and support the people within it.

The maintenance of your flooring has always been an integral component of the delivery of our products. During this time, with the need for enhanced cleaning protocols, companies are exploring the use of alternative products for interim cleaning and disinfection. We are looking to experts, innovators and science to make the best recommendations for the deep cleaning and disinfecting of your floor and maintain the function, appearance and long-term life of your floor.

[To view Floor Cleaning & Enhanced Cleaning Recommendations](#)

Q&A

What is the difference between cleaning and disinfecting?

Cleaning with soap and water removes germs, dirt, and impurities from surfaces. It lowers the risk of spreading infection. Disinfecting kills germs on surfaces. By killing germs on a surface after cleaning, it can further lower the risk of spreading infection. (CDC Resource)

Is cleaning alone effective against the virus that causes COVID-19

Cleaning does not kill germs, but by removing them, it lowers their numbers and the risk of spreading infection. If a surface may have gotten the virus on it from a person with or suspected to have COVID-19, the surface should be cleaned and disinfected. Disinfecting kills germs on surfaces. (CDC Resource)

Who should clean and disinfect our flooring?

Regular cleaning staff can clean and disinfect flooring. Cleaning staff should be trained on the appropriate use of cleaning and disinfection chemicals and provided with the personal protective equipment (PPE) required for the chemicals used. An outside company that specializes in cleaning could also provide this service. (CDC Resource)

How effective are alternative disinfection methods, such as ultrasonic waves, high intensity UV radiation (UVC), and LED blue light?

The efficacy of these disinfection methods against the virus that causes COVID-19 is not known. EPA only recommends use of the surface disinfectants against the virus that causes COVID-19. EPA does not routinely review the safety or efficacy of pesticidal devices, such as UV lights, LED lights, or ultrasonic devices. Therefore, EPA cannot confirm whether, or under what circumstances, such products might be effective against the spread of COVID-19. (CDC Resource)

Will antimicrobials in the flooring product help prevent the spread of COVID-19 or other viruses?

The addition of antimicrobials in products has not been proven effective in inhibiting all microbe growth or killing all microbe types. They can inadvertently discourage proper cleaning methods or lead to inappropriate material selection for the space. Based on the most current research and available materials, Shaw does not offer flooring products with antimicrobials added for the purpose of achieving a health-based product performance outcome.

References / Resources

Fast Company /

<https://www.fastcompany.com/90488060/our-offices-will-never-be-the-same-after-covid-19-heres-what-they-could-look-like>

Gensler /

<https://www.gensler.com/research-insight/blog/how-should-office-buildings-change-in-a-post-pandemic-world>

<https://www.gensler.com/research-insight/blog/what-happens-when-we-return-to-the-workplace>

<https://www.gensler.com/research-insight/blog/community-in-the-post-pandemic-open-office>

Bis Now /

<https://www.bisnow.com/feature/uk-future-of-work/offices-are-about-to-cause-productivity-to-explode-104001>

<https://www.bisnow.com/chicago/news/office/office-workers-will-return-with-radically-different-expectations-and-worries-103966>

CBRE /

<https://www.cbre.com/covid-19/reopening-the-worlds-workplaces?article=7c4fc873-6d81-48a1-9284-d86c35a1f379&feedid=fab9f8b5-57a6-4d15-b9e2-f5bd185db42e>

HOK /

<https://www.hok.com/news/2020-04/will-social-distancing-make-way-for-workplace-distancing/>

https://www.hok.com/news/2020-04/amid-covid-19-lessons-in-workplace-readiness-from-a-corporate-real-estate-director/?landing_page=33588

Herman Miller /

https://www.hermanmiller.com/content/dam/hermanmiller/documents/covid_19/embracing_a_new_reality.pdf

SEPARATE YET TOGETHER
PARATE YET TOGETHER ST
ATE YET *Together* STAY SE
T TOGETHER STAY SEPARA
T TOGETHER STAY SEPARA
TOGETHER STAY SEPARATE